

Accessories



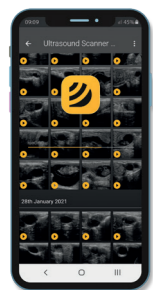
Sun protection shield



Gel Stand-Offs



WiFi antenna



**DRAMINSKI**  
CARE AND SHARE **app**

Android application



SEE MORE

**DRAMINSKI S.A.**

Wiktora Steffena 21, 11-036 Sząbruk, Poland

+48 89 675 26 11 @ ultrasound@draminski.com

[www.draminski.com](http://www.draminski.com)



**iScan 2 MULTI**  
comprehensive diagnostics



# iScan 2 MULTI Ultrasound scanner



iScan 2 MULTI is a multi-task field ultrasound scanner with interchangeable probes for comprehensive diagnostics of small and large animals.

## HIGH IMAGE QUALITY

LuciD™ is a technology reducing the noise and increasing the contrast, sharpness and tissue differentiation in the image. It makes the image clearer and easier to interpret.

## LARGE SCREEN

7" LCD screen with wide viewing angles ensures comfortable work. We know that you often face difficult conditions. That is why we rugged the screen making it less prone to damage.

## START EXAMINATION IN A FEW SECONDS

Adjust the scanner to your needs - select the most used functions and save them in the quick access menu (Q). These one-button access will make your work faster and more friendly.

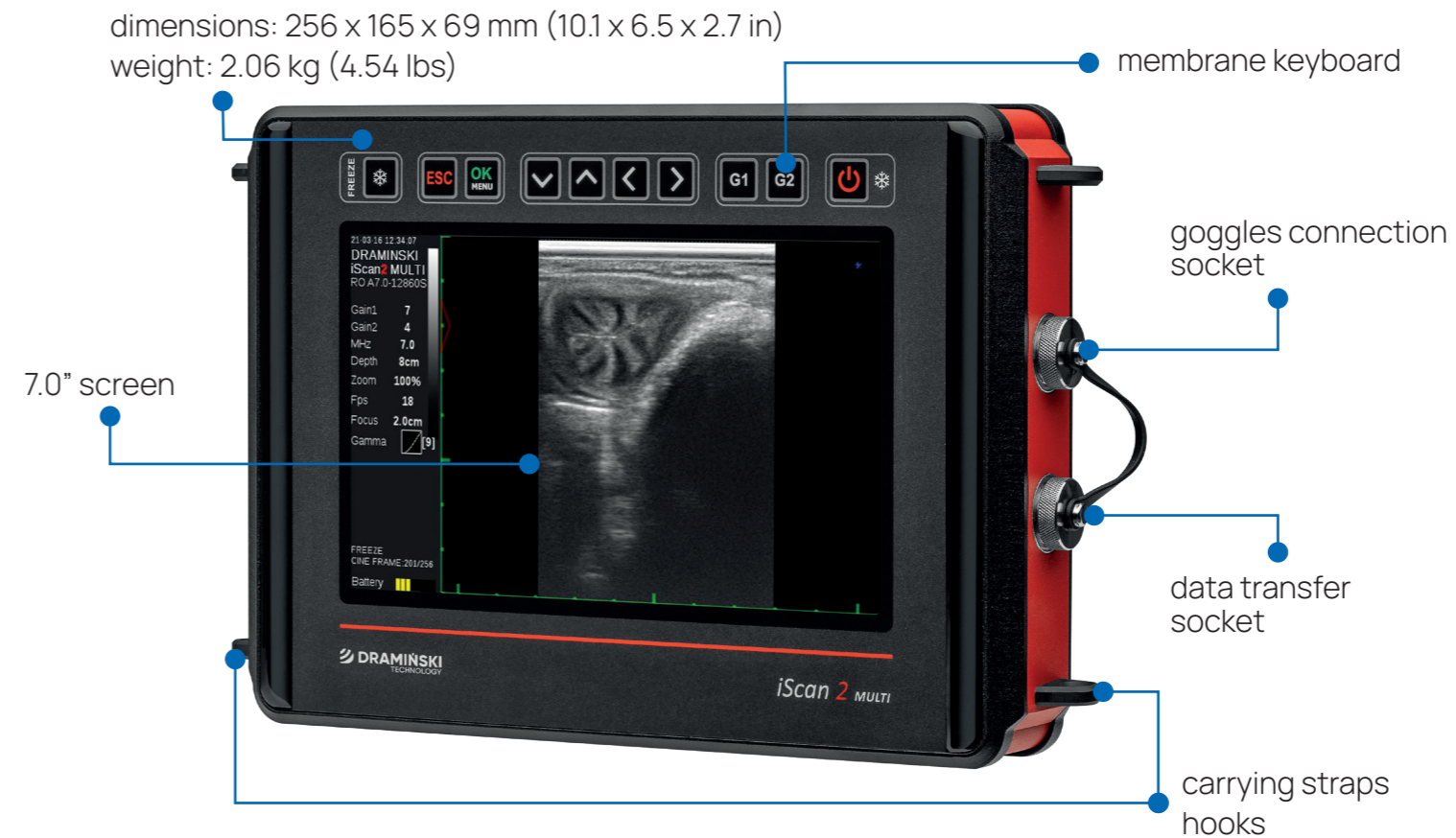
## CLEANING AND DISINFECTION

Flat screen, probe socket protection slide and waterproof keys make cleaning the ultrasound scanner easier and more comfortable.

## STURDY AS ALWAYS, LIGHTER THAN YOU EXPECTED

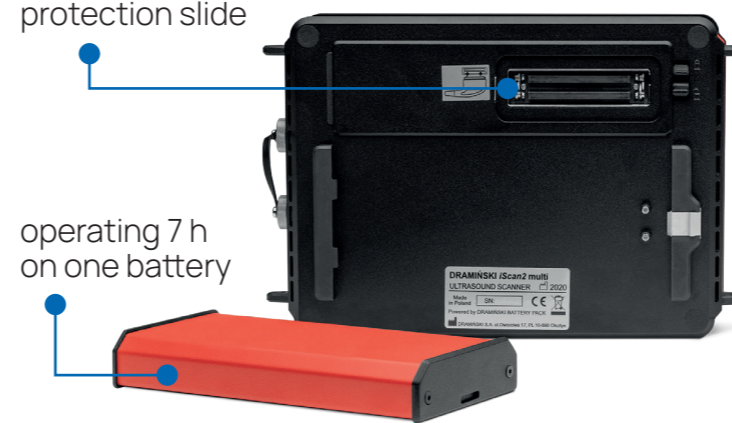
Rugged casing makes the iScan 2 MULTI extra durable. The active ventilation system implemented in the casing ensures smooth operation regardless of heat and humidity.

dimensions: 256 x 165 x 69 mm (10.1 x 6.5 x 2.7 in)  
weight: 2.06 kg (4.54 lbs)



probe socket protection slide

operating 7 h on one battery



## Set contains

- iScan 2 MULTI ultrasound scanner
- Ultrasound probe of your choice\*
- External battery
- Battery charger
- USB adapter
- Carrying straps
- Transport case
- User guide (USB)

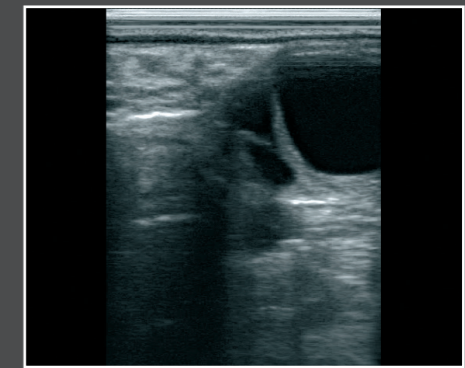
\* Select the probe prior to purchase

## Wide range of available probes

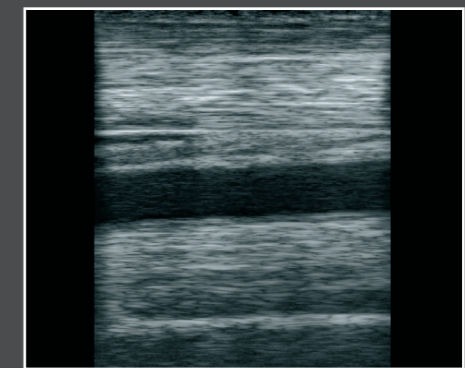


Lots of probes to choose from: 1 Ovum Pick-Up System 2 Linear 3 Microconvex for OPU 4 Convex 3.5 MHz 5 Convex 5.0 MHz 6 Linear rectal 7 Convex rectal

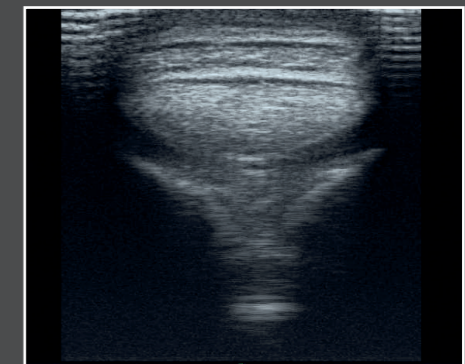
## Diagnostic images



Ovary



Musculoskeletal system



Musculoskeletal system



Eye