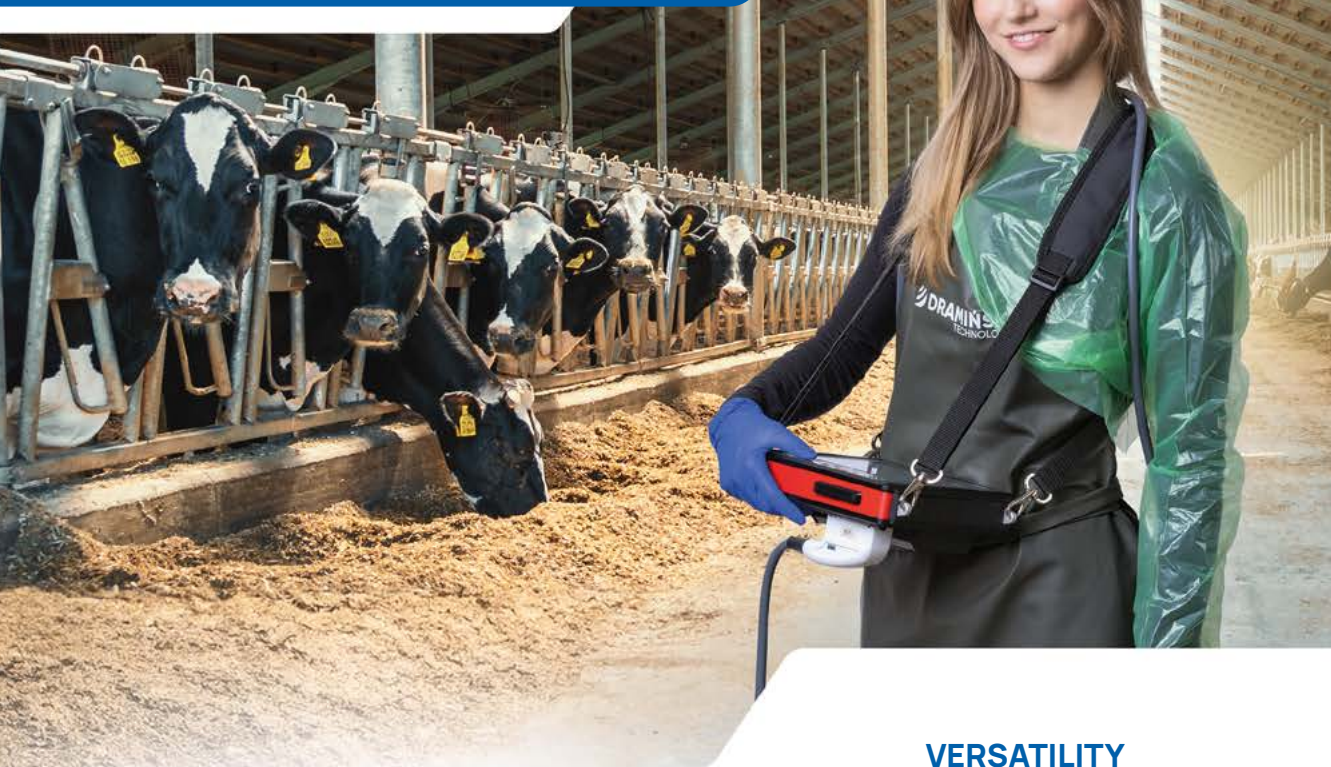


# iScan 3

FIELD ULTRASOUND SCANNER WITH  
**COLOUR DOPPLER IMAGING**

# iScan3

## FIELD ULTRASOUND SCANNER

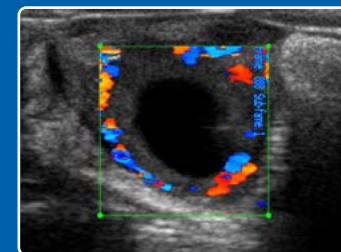


### VERSATILITY

A continually expanding range of compatible probes provides flexibility in patient approach. The **iScan 3** is used for:

- Reproductive system examinations
- Blood flow diagnostics of the corpus luteum
- Pregnancy diagnosis and monitoring
- Determining the viability and sex of the fetus
- Lung, digestive tract, udder and locomotor system examinations

A special guide also enables the performance of OPU procedures



### COLOR DOPPLER

The imaging mode with Color Doppler allows for the diagnosis of corpus luteum activity 18-20 days post-insemination. This enables the identification of cows that have not been fertilized before the next estrus cycle occurs. Instant activation and optimized settings ensure work comfort and usability.

### WIRELESS IMAGE TRANSFER

The built-in WiFi module enables the wireless transfer of ultrasound images to tablets, phones, and **iLens** goggles. Animal owners or students can view the live image from a safe distance, increasing accessibility and convenience.

### ENHANCED ERGONOMICS

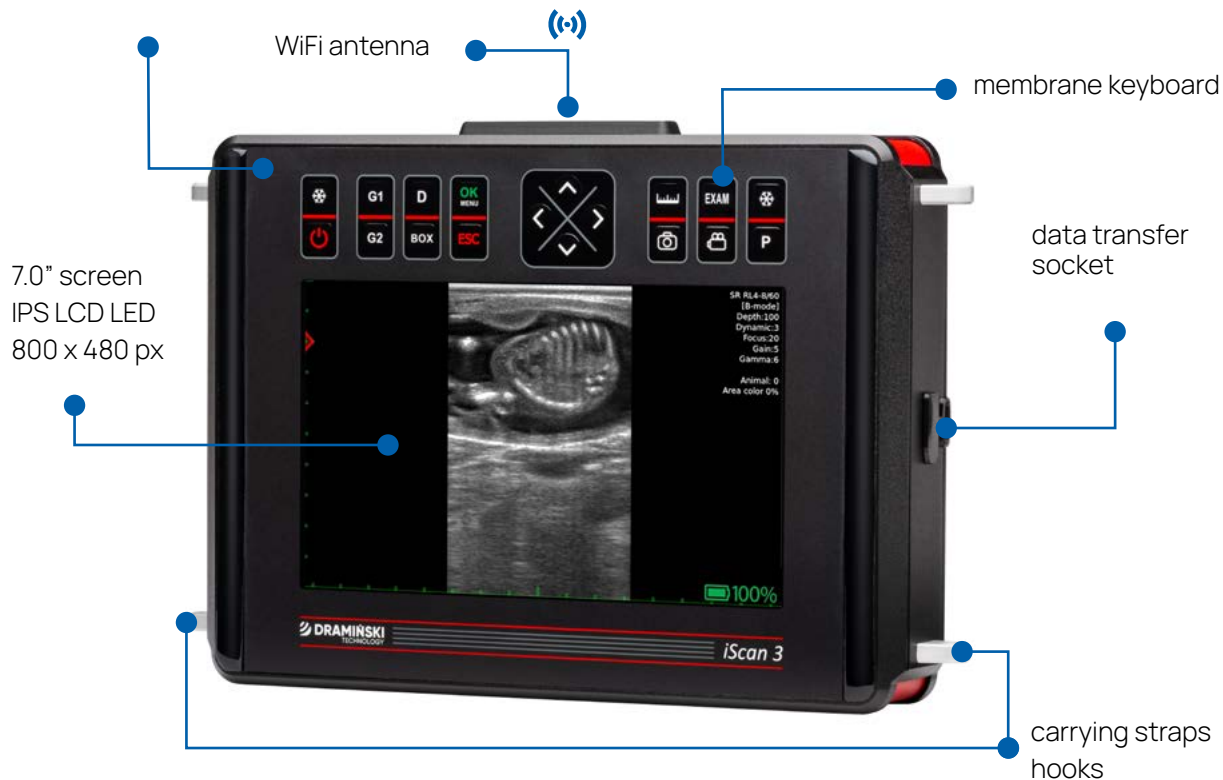
The most important functions are accessible from the keyboard. Dedicated keyboard shortcuts speed up work, with the most recently used measurements set as default. You can also customize the descriptions to suit your preferences.

# iScan 3

Your tool for advanced reproduction management

DIAGNOSTIC IMAGES

dimensions: 270 x 180 x 70 mm  
weight: 2.6 kg



probe socket  
protection slide



# iScan 3



## Set contains:

- **iScan 3** ultrasound scanner
- Ultrasound probe of your choice\*
- External battery
- Battery charger
- Carrying straps
- Transport case
- User guide (USB)

\* Select the probe prior to purchase

Electronic, broadband, interchangeable.

- Probe 156 – Convex 5MHz R50
- Probe 181 – Microconvex 6,5 MHz R11
- Probe 196 – Linear abdominal 8MHz L40
- Probe 212 – Convex rectal 5MHz R60
- Probe 223 – Linear rectal 7MHz L60





SEE MORE

## DRAMIŃSKI S.A.

Wiktora Steffena 21, 11-036 Sząbruk, Poland



89 675 26 00



ultrasound@draminski.com

Follow us:



[www.draminski.com](http://www.draminski.com)